

380 EC-B 16 Litronic

Lifting capacity (max.): 16,000 kg

Radius (max.): 75.0 m

Lifting capacity at the tip (max.): 3,400 kg



A new dimension in efficiency and safety

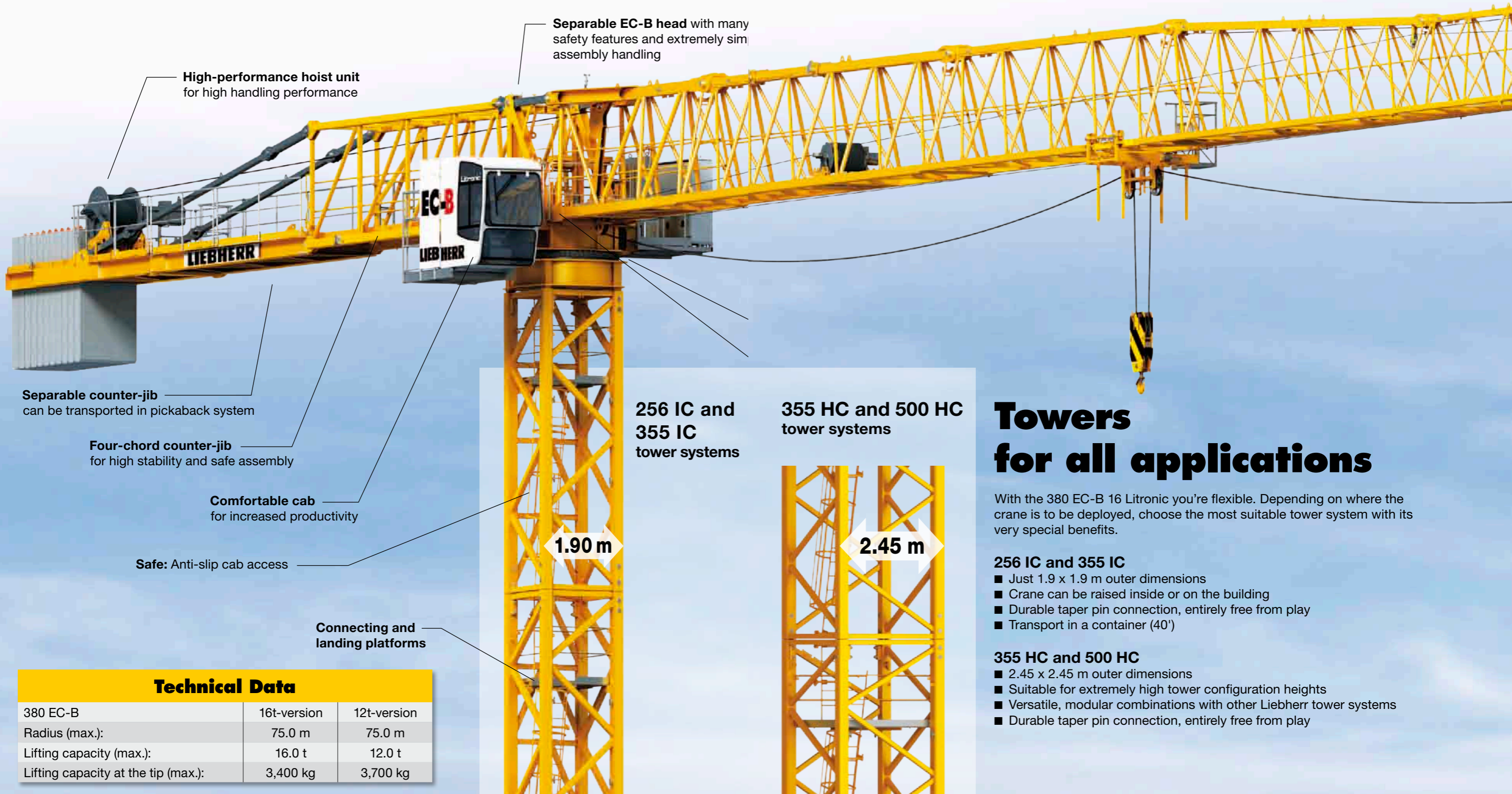
- Efficient transportation
- Efficient and safe assembly
- Efficient working



LIEBHERR

The new 380 EC-B 16 Litronic

The 380 EC-B 16 Litronic extends Liebherr's flat-top series upwards. Apart from efficient transport and assembly, the performance and safety of this construction crane are particularly impressive. Let us convince you. The 380 EC-B 16 Litronic is also available in a 12-tonne version.



High-performance hoist unit
for high handling performance

Separable EC-B head with many safety features and extremely simple assembly handling

Separable counter-jib
can be transported in pickaback system

Four-chord counter-jib
for high stability and safe assembly

Comfortable cab
for increased productivity

Safe: Anti-slip cab access

Connecting and landing platforms

256 IC and 355 IC tower systems

355 HC and 500 HC tower systems

1.90 m

2.45 m

Towers for all applications

With the 380 EC-B 16 Litronic you're flexible. Depending on where the crane is to be deployed, choose the most suitable tower system with its very special benefits.

256 IC and 355 IC

- Just 1.9 x 1.9 m outer dimensions
- Crane can be raised inside or on the building
- Durable taper pin connection, entirely free from play
- Transport in a container (40')

355 HC and 500 HC

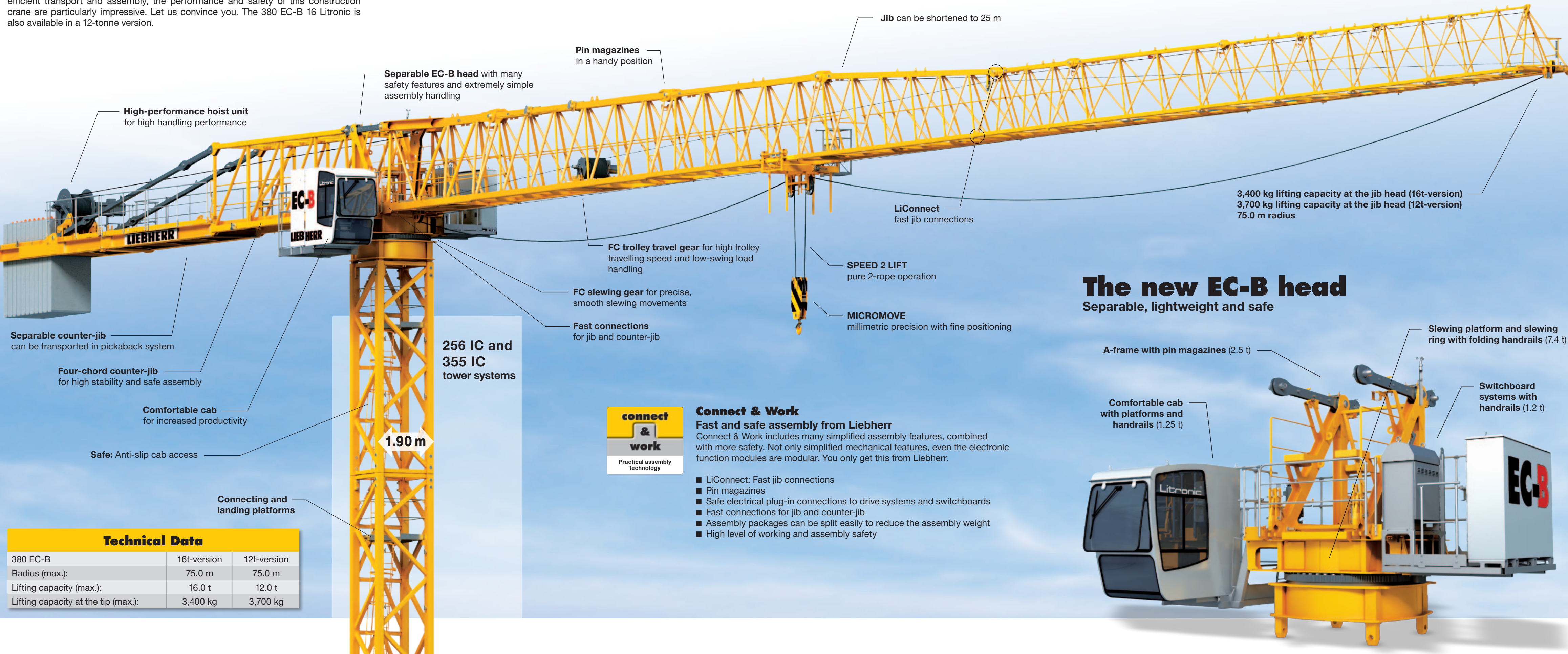
- 2.45 x 2.45 m outer dimensions
- Suitable for extremely high tower configuration heights
- Versatile, modular combinations with other Liebherr tower systems
- Durable taper pin connection, entirely free from play

Technical Data

380 EC-B	16t-version	12t-version
Radius (max.):	75.0 m	75.0 m
Lifting capacity (max.):	16.0 t	12.0 t
Lifting capacity at the tip (max.):	3,400 kg	3,700 kg

The new 380 EC-B 16 Litronic

The 380 EC-B 16 Litronic extends Liebherr's flat-top series upwards. Apart from efficient transport and assembly, the performance and safety of this construction crane are particularly impressive. Let us convince you. The 380 EC-B 16 Litronic is also available in a 12-tonne version.



High-performance hoist unit for high handling performance

Separable EC-B head with many safety features and extremely simple assembly handling

Pin magazines in a handy position

Jib can be shortened to 25 m

LiConnect fast jib connections

3,400 kg lifting capacity at the jib head (16t-version)
3,700 kg lifting capacity at the jib head (12t-version)
75.0 m radius

FC trolley travel gear for high trolley travelling speed and low-swing load handling

SPEED 2 LIFT pure 2-rope operation

MICROMOVE millimetric precision with fine positioning

FC slewing gear for precise, smooth slewing movements

Fast connections for jib and counter-jib

The new EC-B head

Separable, lightweight and safe

A-frame with pin magazines (2.5 t)

Slewing platform and slewing ring with folding handrails (7.4 t)

Comfortable cab with platforms and handrails (1.25 t)

Switchboard systems with handrails (1.2 t)

Separable counter-jib can be transported in pickaback system

Four-chord counter-jib for high stability and safe assembly

Comfortable cab for increased productivity

Safe: Anti-slip cab access

256 IC and 355 IC tower systems

1.90 m

Connecting and landing platforms



Connect & Work

Fast and safe assembly from Liebherr

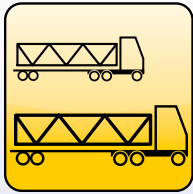
Connect & Work includes many simplified assembly features, combined with more safety. Not only simplified mechanical features, even the electronic function modules are modular. You only get this from Liebherr.

- LiConnect: Fast jib connections
- Pin magazines
- Safe electrical plug-in connections to drive systems and switchboards
- Fast connections for jib and counter-jib
- Assembly packages can be split easily to reduce the assembly weight
- High level of working and assembly safety

Technical Data

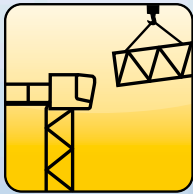
380 EC-B	16t-version	12t-version
Radius (max.):	75.0 m	75.0 m
Lifting capacity (max.):	16.0 t	12.0 t
Lifting capacity at the tip (max.):	3,400 kg	3,700 kg

Even more benefit



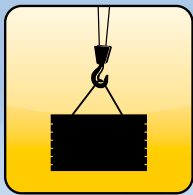
Do the job properly

- Top part of the crane can be transported complete in 40' containers
- Complete top part of the crane can be transported with just 5 trucks
- Transport made easy with integrated connection elements



Simply well-placed

- Connect & Work
- Safety according to EN 14439
- Low assembly weights
- Can be assembled with small mobile cranes
- Many safety features
- Separable assembly packages



Work quickly and safely

- Energy-efficient Liebherr high-performance drive systems
- Safety-based crane controls
- Litronic version
- LiDAT fleet management
- Electronic function modules

- Electronic monitor system EMS
- Load-moment limiting system LMB
- Operating-range limiting system ABB
- Machine data evaluation program MDA
- Electronic anti-collision system AKS (interface)

