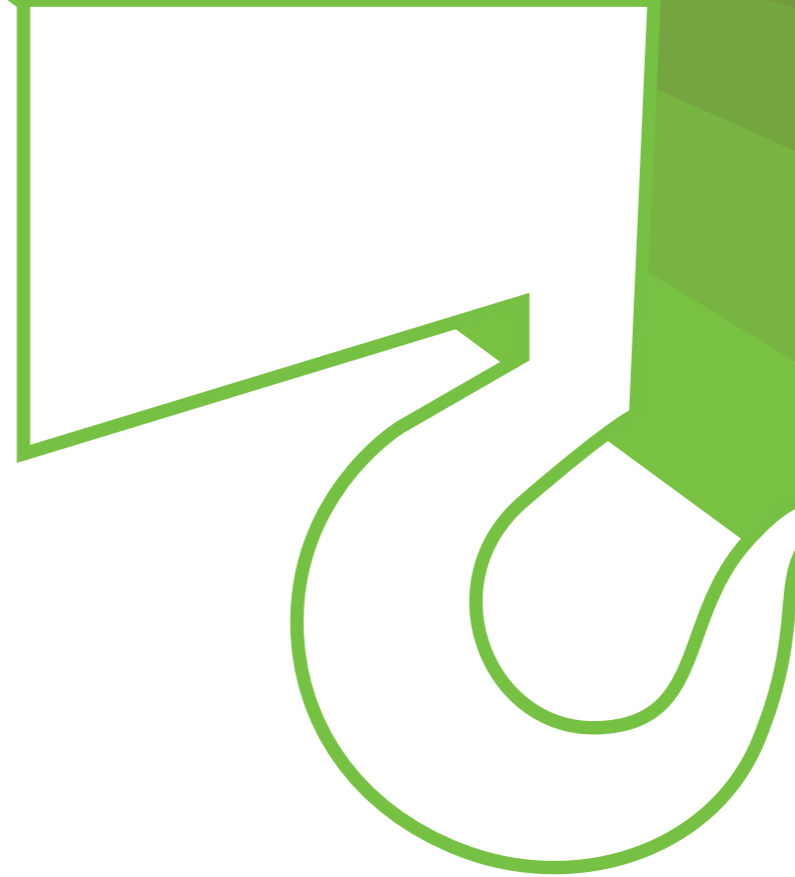


Data subject to change without prior notice
Edition 02/2026 © 2026 JMG Cranes S.p.A. All rights reserved
Rev. 00



Electric pick & carry cranes



MC160
(metric)
Maximum capacity
16t

EU standards CE

UNI ISO 4301-1: A1
2006/42 CE-2014/30 UE-2014/35 UE
2000/14 CE and subsequent amendments.
EN 13000:2014-ANSI/ASME B30.5-2021
and subsequent amendments.



JMG Cranes S.p.A.

Offices and plant: Via dell'Innovazione, 3 - 29010 Sarmato (PC) - Italy

Registered Office: Via Dante, 15 - 26100 Cremona - Italy

Administration: Via Bergamo, 142 - 26100 Cremona - Italy

+39 0523 8486

info@jmgcranes.com

www.jmgcranes.com





Features

- Electric mobile crane
- Proportional telescopic boom
- Front wheels drive with counter-rotation
- Tiltable head
- 3 removable counterweights

Optional

- Without cabin
- Hydraulic winch
- Articulated jib with mechanical extension
- Hydraulic jib with hydraulic extension
- Hydraulic forks
- Radio remote control
- Customer paint colour



Technical features

Maximum capacity	
	16t

Dimensions mm	
	4.440x2.070x2.000

Front wheels drive
nr.2 electric motors 10kW 96V AC

Total kg 19.950
nr.3 removable counterweights
kg 5.070 (kg 1.970+kg 1.970+kg 1.130)

Lithium 96V 630 Ah

nr.4 front superelastic 355/50-20"
nr.2 rear superelastic 355/50-20"

Rear steering
Steering angle -90°/+90°

L.M.I. Electronic safe load indicator and tilting moment limiter

Automatic braking system

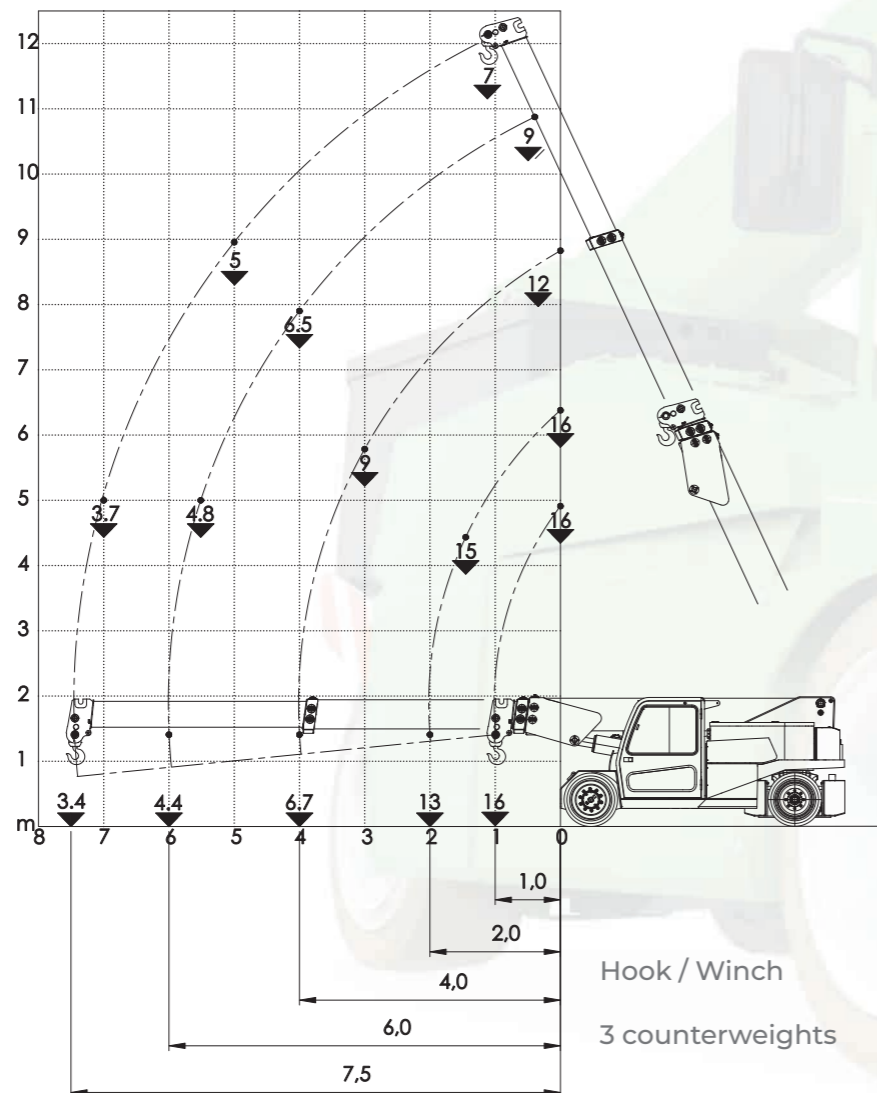
Fabricated from preformed and welded quality steel plate

Inclination angle +65°/-4°

nr.1 electric motor 23kW 96V AC
nr.1 electric motor 16kW 96V AC

Load charts

	16 t
	2,75 t



Overall dimensions

