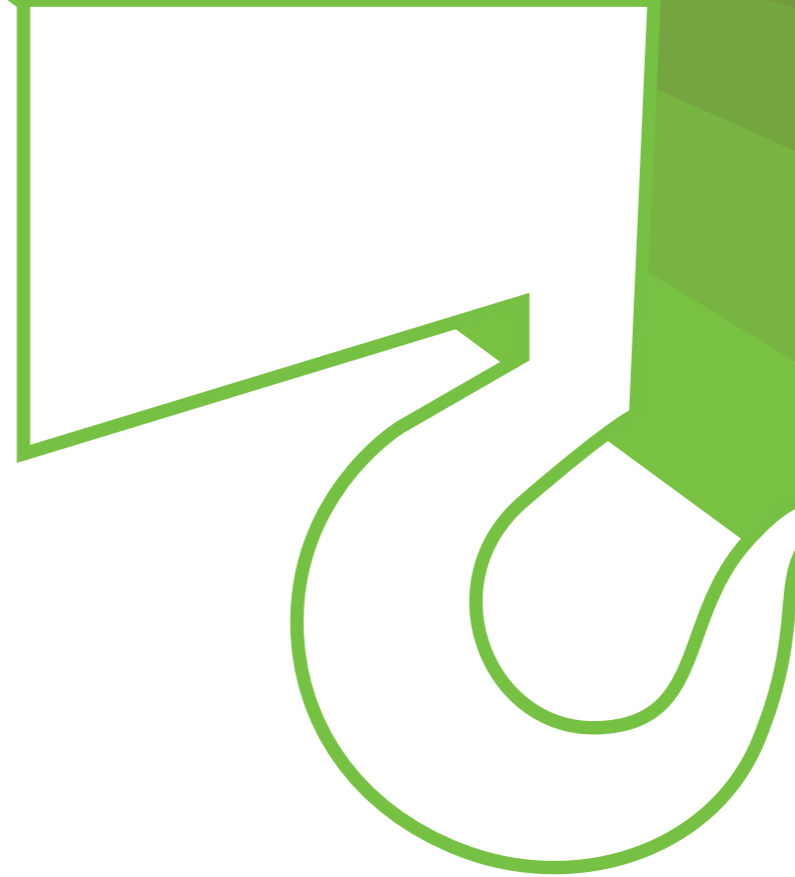


Data subject to change without prior notice
Edition 02/2026 © 2026 JMG Cranes S.p.A. All rights reserved
Rev. 00



Electric pick & carry cranes



MC25S
(metric)
Maximum capacity
2,5t

EU standards CE

UNI ISO 4301-1: A1
2006/42 CE-2014/30 UE
2000/14 CE and subsequent amendments.
EN 13000:2014-ANSI/ASME B30.5-2021
and subsequent amendments.



JMG Cranes S.p.A.

Offices and plant: Via dell'Innovazione, 3 - 29010 Sarmato (PC) - Italy

Registered Office: Via Dante, 15 - 26100 Cremona - Italy

Administration: Via Bergamo, 142 - 26100 Cremona - Italy

+39 0523 8486

info@jmgcranes.com

www.jmgcranes.com





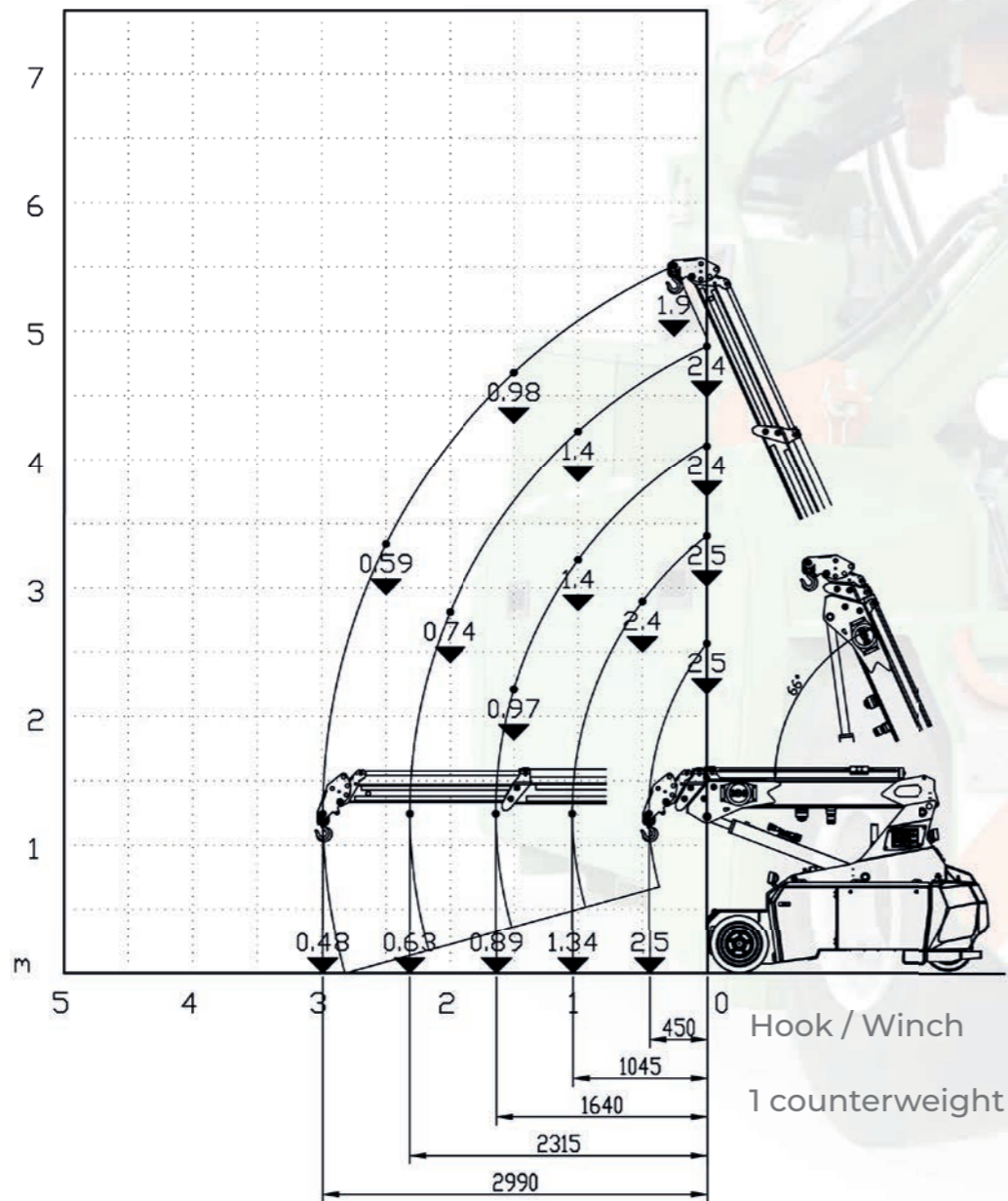
Features

- Radio-controlled mobile crane
- Hydraulic sequential boom
- Front wheels drive with counter-rotation
- Tilting head 3 positions (0°/+35°/+70°)
- 1 removable counterweight
- USB - USB C plug

Optional

- Hydraulic winch
- Lithium battery
- Bendable manual extension
- Tool box
- Glass manipulator
- Customer paint colour

Load charts



Technical features

Maximum capacity	2,5t
Dimensions mm	2.190x900x1.610

- Front wheels drive nr.2 electric motors 2kW 24V AC
- Total kg 2.400 nr.1 removable counterweight kg 750
- Armoured plate battery 24V 420Ah
- nr.2 front superelastic 18x7/8" nr.2 rear superelastic 15x4 1/2-8"
- Rear steering Steering angle -90°/+90°
- L.M.I. Electronic safe load indicator and tilting moment limiter
- Automatic braking system
- Fabricated from preformed and welded quality steel plate
- Inclination angle +66°/-15°
- Electric motor 3kW 24V DC

Overall dimensions

