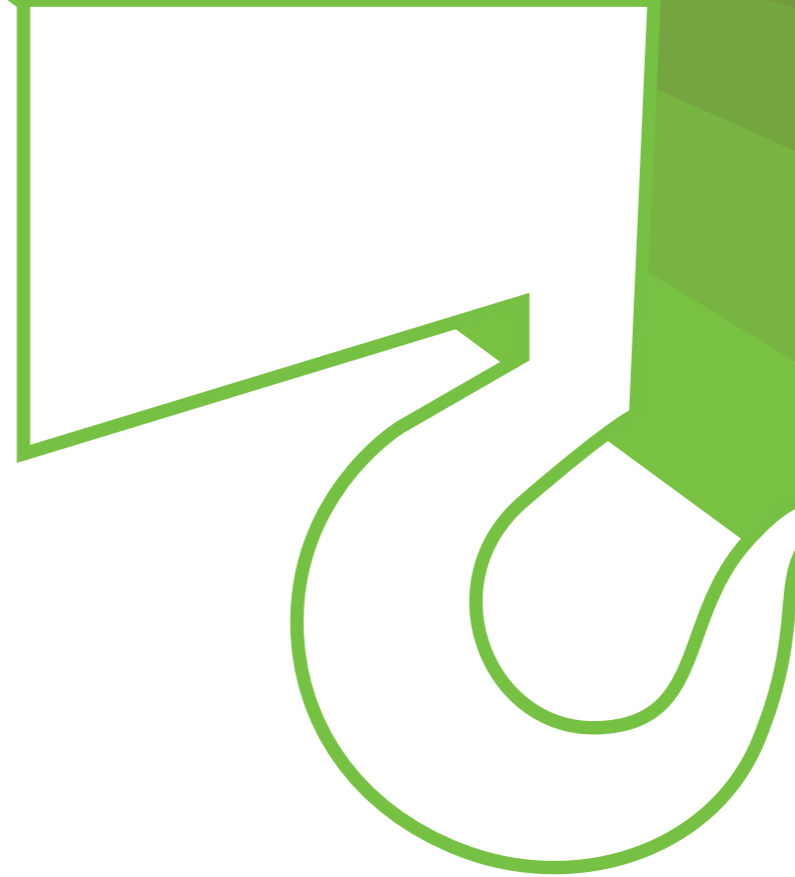


Data subject to change without prior notice
Edition 02/2026 © 2026 JMG Cranes S.p.A. All rights reserved
Rev. 00



Electric pick & carry cranes



MC750TC

(metric)

Maximum capacity
0,75t

EU standards CE

UNI ISO 4301-1: A1
2006/42 CE-2014/30 UE-2014/35 UE
2000/14 CE and subsequent amendments.
EN 13000:2014-ANSI/ASME B30.5-2021
and subsequent amendments.



JMG Cranes S.p.A.

Offices and plant: Via dell'Innovazione, 3 - 29010 Sarmato (PC) - Italy

Registered Office: Via Dante, 15 - 26100 Cremona - Italy

Administration: Via Bergamo, 142 - 26100 Cremona - Italy

+39 0523 8486

info@jmgcranes.com

www.jmgcranes.com

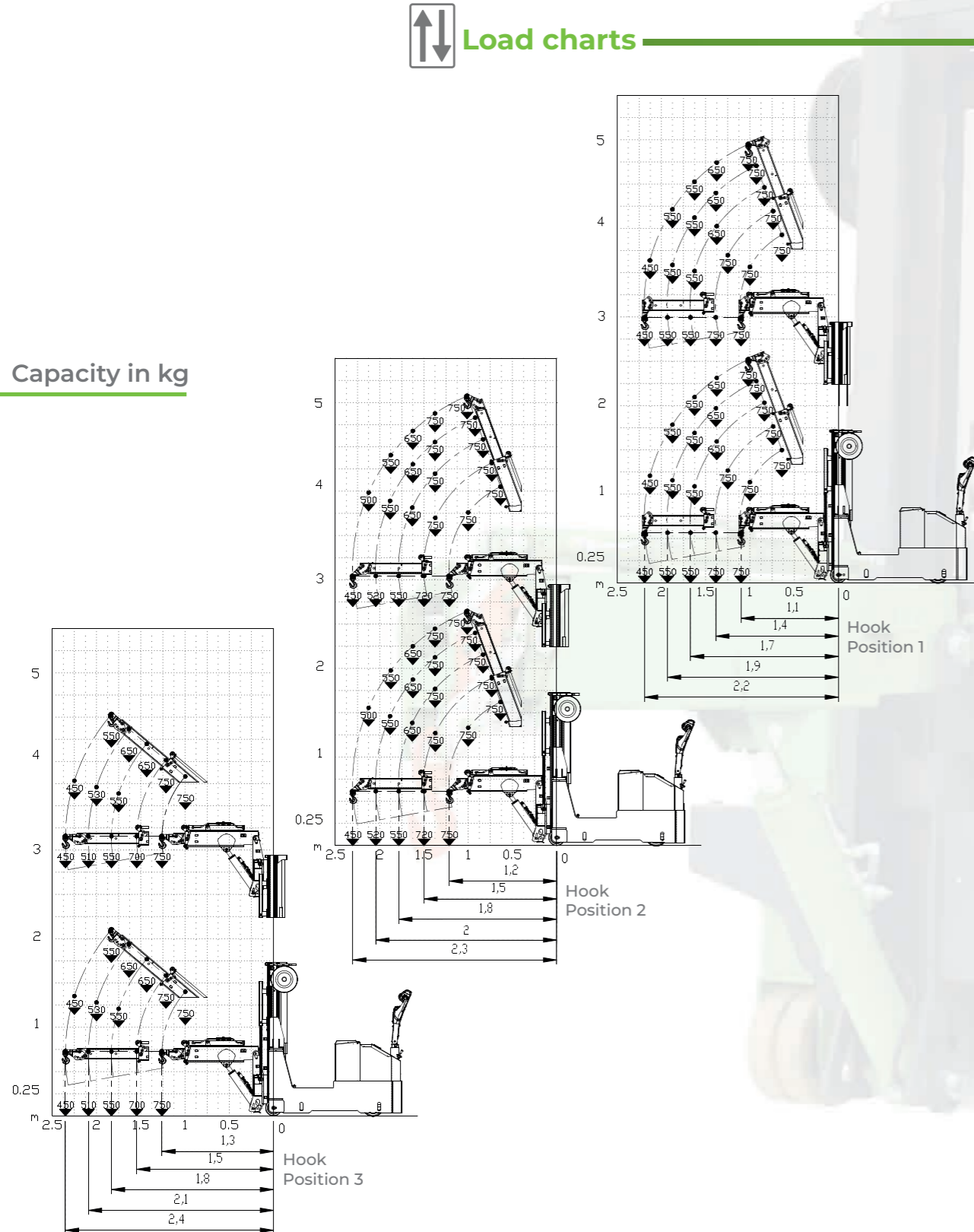




Features

- Full free lift mast
- Steering and traction: servo-assisted steering standard
- Alternating current (AC) traction motors
- Counter-balanced system without baselegs
- 3 position tiltable head (0°/45°/90°)
- Long lasting battery: 24V armored batteries with a capacity of 270 Ah

Load charts



Technical features

Retracted boom horizontal	0,75t
Dimensions mm	2.565x885x1.728
Total weight	kg 2.300
L.M.I.	Electronic safe load indicator and tilting moment limiter

Overall dimensions

