

# 710 HC-L

Sets new marks in lifting weights

**LIEBHERR**

# The new 710 HC-L

## Sets new marks in lifting weights

- Up to 64.0 t maximum load
- Maximum 65.0 m jib length
- Single parts minimized to 10.0 t for easy Derrick disassembly
- Up to 1,100 m hook height
- Optional Fly-Jib

Developing the new 710 HC-L luffing jib crane, we did not simply want to increase our smaller luffing jib cranes but to fulfill our customers' special requirements. The result is a completely redesigned crane which sets new marks in performance, efficiency and flexibility.

---

### There's power in it

In order to reach fast hoist speeds, the 710 HC-L uses two hoist drives simultaneously. Luffing speeds are increased by using powerful drives in combination with a new software logic. This crane is available in four versions.

	710 HC-L 25/50	710 HC-L 32/64	Luffing drive (kW)
Hoist gears (kW)	2 x 65	2 x 65	110
	2 x 110	2 x 110	160

### Easy handling

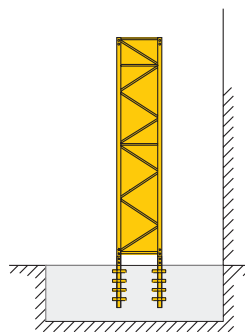
Operate with ease using a powerful PLC combining features like horizontal load movement and the fine positioning mode MICROMOVE. All electronic components have been incorporated into one switch cabinet making inspection and maintenance easier than ever.

### Easy going – from place to place

Despite its great performance the 710 HC-L can be transported in containers and disassembled by a Liebherr Derrick crane. Each crane part has been minimized to 10 t maximum.

### High tower – all new

With the new tower system the 710 HC-L climbs inside or outside the building. The redesigned tower comes with the established measurements of 2.43 m external dimension.



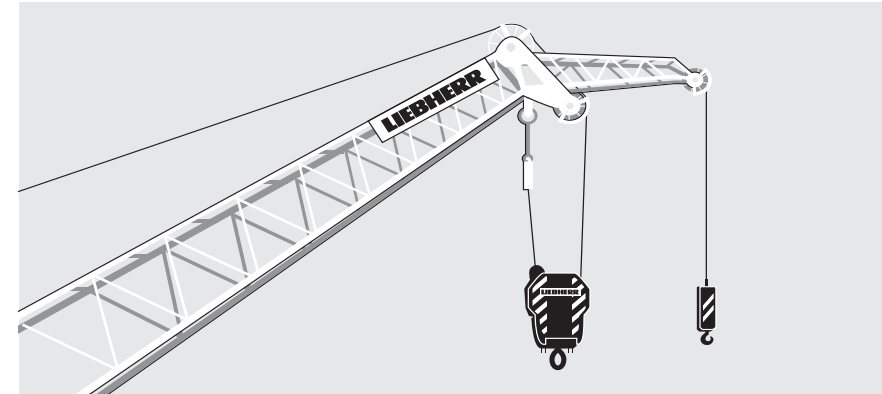
New tower: 2.43 m external dimension; internal or external climbing

#### Free standing tower heights

External climbing; C25				
jib length (m)	30.0	40.0	50.0	65.0
tower height (m)	74,8	69,1	63,4	52,0

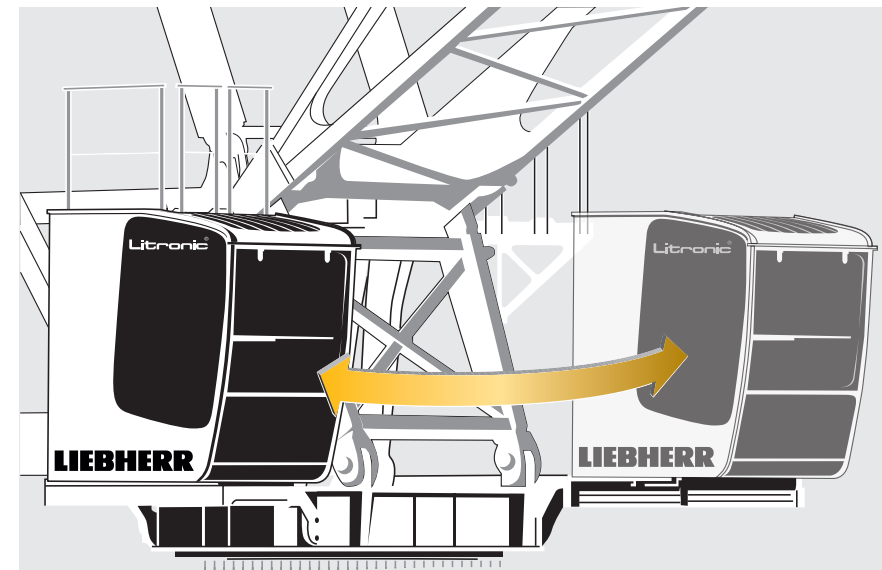
### Turn and lift

The 710HC-L can be optionally equipped with an additional hook, the „Fly-Jib“, for lifting loads of up to 13.1 t and turning large components.



### Modular concept

With the new platform design the decision on which side you want the cabin is up to you. According to the requirements of your construction site you place it either left or right.



Which side are you on? With the 710 HC-L: on both.



Made in Germany