

50m - 1.250kg

45m - 1.500kg

40m - 1.800kg

33m - 2.200kg

28m - 2.500kg

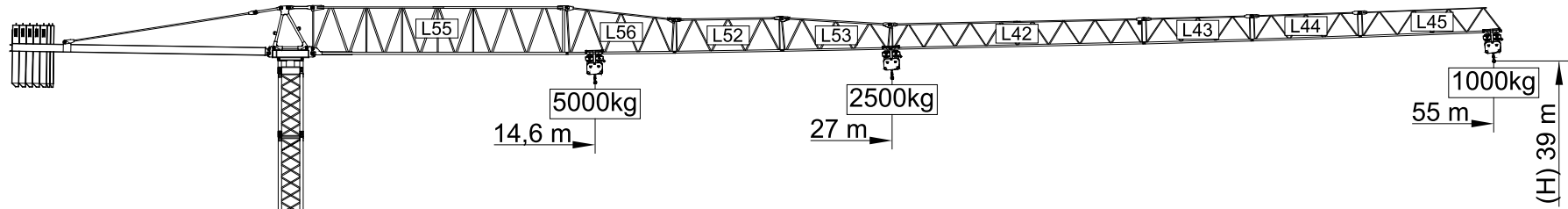
I

II

III

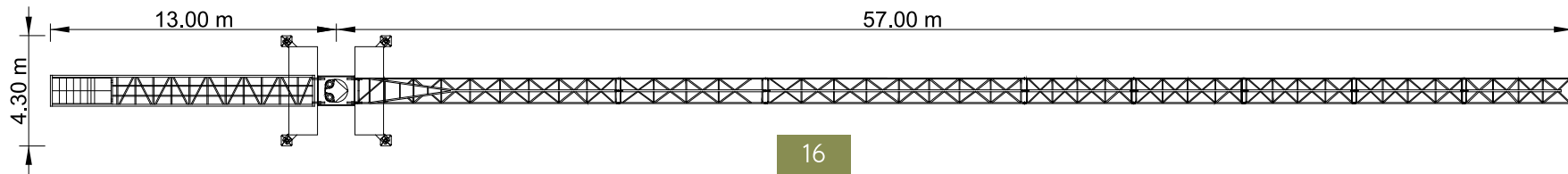
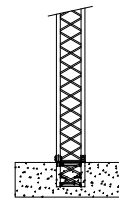
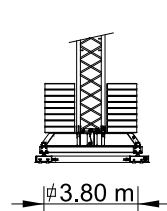
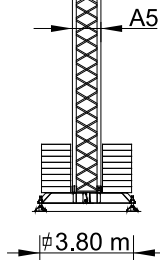
IV

V



Cargas.Loads.Lasten.Charges.Cargas.Carichi.Yükler. ГРУЗОПОДЪЕМНОСТЬ

Icon	Diagram	Kg/m 5000 M/КГ	Kg 2500	m										
					13	18	23	28	33	40	45	50	55	
12000 kg 5x2000 + 2x1000 kg	55m	L55+L56+L52+L53 +L42+L43+L44+L45	27 m	☞	2500	2500	2500	2500	2000	1600	1400	1200	1000	
			14,6 m	☞	5000	3980	3020	2500	2000	1600	1400	1200	1000	
11000 kg 5x2000 + 1x1000 kg	50m	L55+L56+L52+L53 +L42+L43+L45	28,8 m	☞	2500	2500	2500	2500	2130	1670	1440	1250		
			15,6 m	☞	5000	4270	3340	2590	2130	1670	1440	1250		
9000 kg 4x2000 + 1x1000 kg	45m	L55+L56+L53+L42+L43+L45	29,7 m	☞	2500	2500	2500	2500	2210	1740	1500			
			16,1 m	☞	5000	4420	3360	2680	2210	1740	1500			
8000 kg 3x2000 + 2x1000 kg	40m	L55+L56+L53+L42+L45	30,5 m	☞	2500	2500	2500	2500	2280	1800				
			16,5 m	☞	5000	4550	3460	2760	2280	1800				
7000 kg 3x2000 + 1x1000 kg	33m	L55+L56+L53+L43+L45	29,6 m	☞	2500	2500	2500	2500	2200					
			16 m	☞	5000	4540	3450	2760	2200					
6000 kg 2x2000 + 2x1000 kg	28m	L55+L56+L53+L45	28 m	☞	2500	2500	2500	2500						
			15,2 m	☞	5000	4180	3170	2500						



# SGT 5510TL 2015

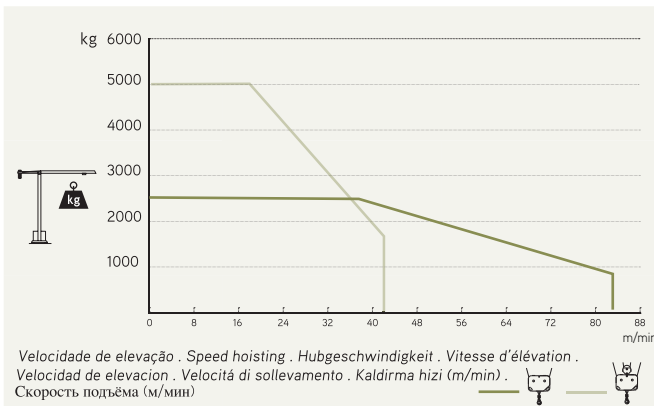
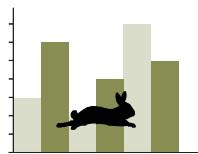
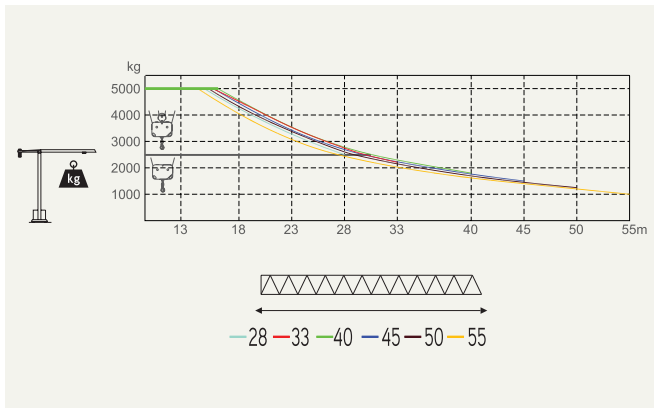
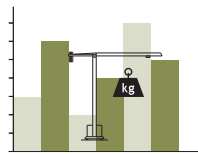
55m - 1.000kg

5.000Kg

Características . Eigenschaften  
Caractéristiques . Caratteristiche . Caratteristiche  
Özellikler . ХАРАКТЕРИСТИКИ

	0 a 82 m/min 0 a 41 m/min	15 kW
	0 a 1 r.p.m.	2x5 daN.m
	0 a 60 m/min	3 kW
	15 m/min	2x3 kW
		30 kVA
		400 V +- 5% (50/60 Hz)

\* Опção . Option . Optional . Option . Opcción . Opzione . Seçenek . Опция



Velocidade de elevação . Speed hoisting . Hubgeschwindigkeit . Vitesse d'élevation .  
Velocidad de elevación . Velocità di sollevamento . Kaldırma hızı (m/min) .  
Скорость подъёма (м/мин)

Elementos . Parts . Teile . Éléments . Elementos . Elemento . Parçalar . ЭЛЕМЕНТЫ

		A (mm)	B (mm)	C (mm)	kg	Code
L55		11950	1210	2600	3100	
L56		5200	1160	1930	590	
L52		5200	1160	1650	535	
L53		5200	1160	1650	510	
L42		11820	1160	1210	820	
L43		5100	1160	1210	260	509 55 10
L44		5100	1160	1210	230	
L45		6800	1160	1210	290	
RS6 RI5		2250	1350	2050	2640	
P1		1660	1220	1720	720	
CL 12		12000	1380	560	2560	
CP1		1160	165	3140	2x1000 2000	704 15 00
CP2		1160	330	3140	5x2000 10000	704 20 00
TOTAL					24255	
A5		11985	1160	1160	3080	530 12 00
A5		6075	1160	1160	1660	530 06 00
A5		3120	1160	1160	990	530 06 01
A5		3090	1385	1385	1040	530 06 03
A5		1275	1160	1160	450	530 06 02
A5		5530	500	750	1250	
A5		2270	360	750	2x635 1270	630 00 03
TOTAL					2520	

SGT  
5510TL