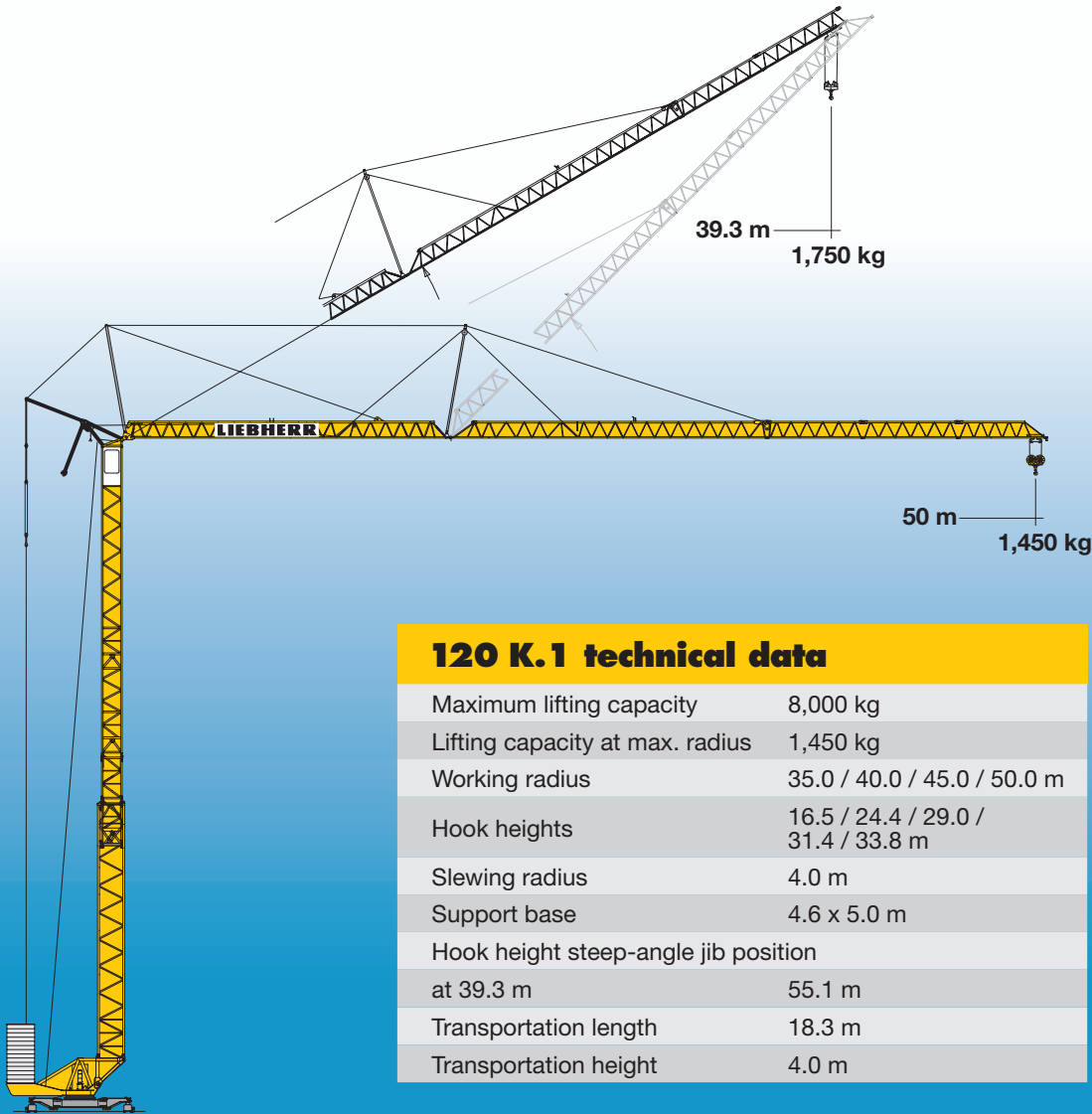


Stepless operating speeds for all drive systems: The new 120 K.1 fast-erecting crane



LIEBHERR

Outline specification.



More capacity with stepless drives

Frequency-controlled hoist gear

- Absolutely stepless hoisting and lowering of the load
- High handling capacity
- Sensitive load positioning

Frequency-controlled slewing gear

- Sensitive, jerk-free slewing movements
- Stepless working speeds
- Automatic damping of swinging loads
- Electronic wind load regulation

Frequency-controlled trolley gear

- Stepless trolley travelling
- Large capacity ranges
- High trolley speeds

More benefits

- All drives controlled by frequency converters
- Variable hook heights
- Adaptable by means of 30° steep-angle jib position and 45° obstruction-avoiding jib position
- Can be transported with max. jib length
- Simple ballasting thanks to automatic ballasting device
- Fast climbing equipment
- Minimal starting currents - low current consumption