

50m - 1.400kg

45m - 1.600kg

40m - 1.800kg

35m - 2.000kg

31m - 2.300kg

26m - 2.800kg

I

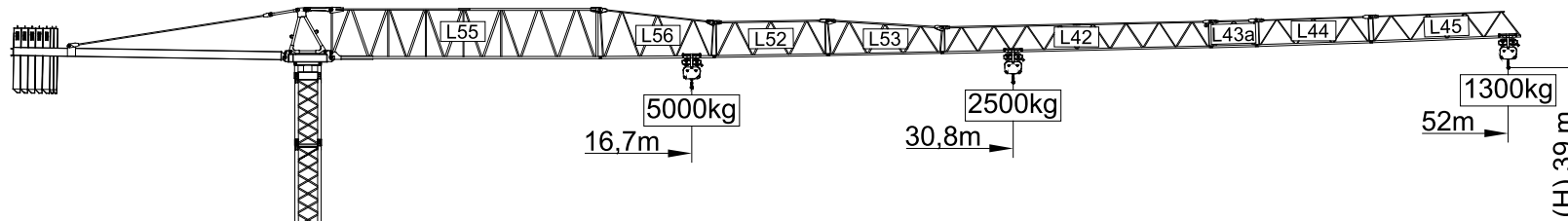
II

III

IV

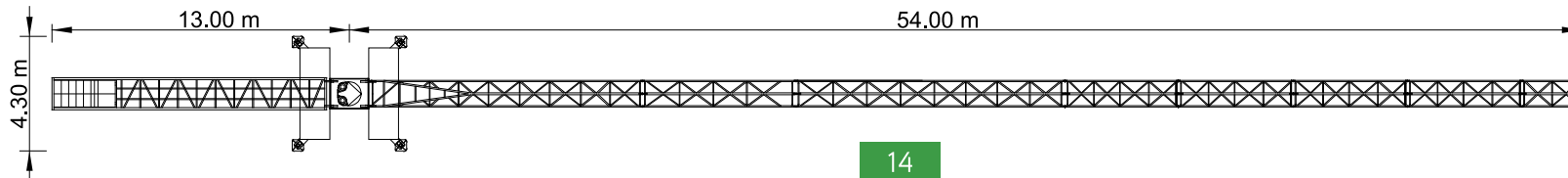
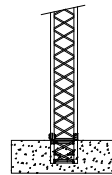
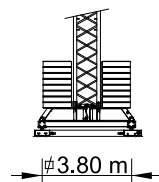
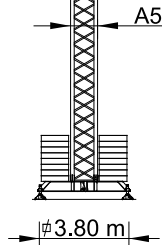
V

VI



Cargas.Loads.Lasten.Charges.Cargas.Carichi.Yükler. ГРУЗОПОДЪЕМНОСТЬ

Icon	Jib Diagram	5000 Kg	Kg/m M/КТ	2500 Kg	m	16	21	26	31	35	40	45	50	52
						Kg	Kg	Kg	Kg	Kg	Kg	Kg	Kg	Kg
12000 kg 5x2000 + 2x1000 kg	52m	L55+L56+L52+L53+L42 L43a+L44+L45	5000	2500	30,8 m	2500	2500	2500	2480	2150	1820	1570	1370	1300
						5000	3880	3050	2480	2150	1820	1570	1370	1300
11000 kg 5x2000 + 1x1000 kg	50m	L55+L56+L52+L53+L42 L44+L45	5000	2500	31,0 m	2500	2500	2500	2500	2190	1860	1600	1400	
						5000	3950	3100	2530	2190	1860	1600	1400	
9000 kg 4x2000 + 1x1000 kg	45m	L55+L56+L53+L42 L44+L45	5000	2500	31,2 m	2500	2500	2500	2500	2180	1850	1600		
						5000	3940	3090	2520	2180	1850	1600		
8000 kg 3x2000+ 2x1000 kg	40m	L55+L56+L53+L42+L45	5000	2500	30,5 m	2500	2500	2500	2450	2120	1800			
						5000	3830	3010	2450	2120	1800			
7000 kg 3x2000+ 1x1000 kg	35m	L55+L56+L52+L53 L43a+L45	5000	2500	29,0 m	2500	2500	2500	2310	2000				
						4900	3630	2840	2310	2000				
7000 kg 3x2000+ 1x1000 kg	31m	L55+L56+L52+L53+L44	5000	2500	28,9 m	2500	2500	2500	2300					
						4870	3610	2820	2300					
6000 kg 2x2000+ 2x1000 kg	26m	L55+L56+L52+L53	5000	2500	26,0 m	2500	2500	2500						
						4830	3570	2800						



SGT 5213TL

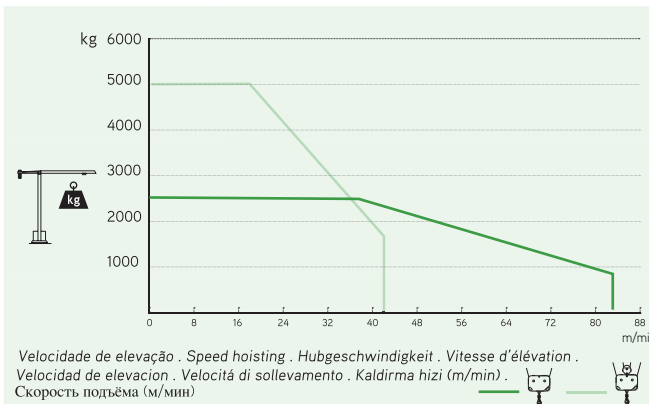
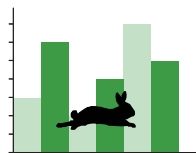
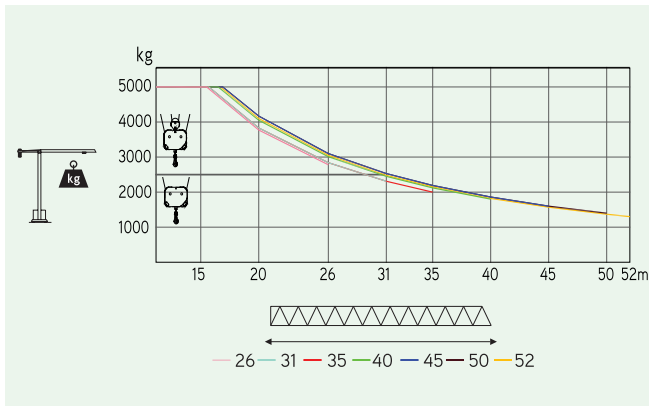
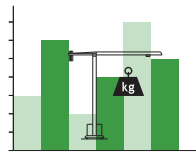
52m - 1.300kg

5.000Kg

Características . Eigenschaften
Caractéristiques . Caratteristiche . Caratteristiche
Özellikler . ХАРАКТЕРИСТИКИ

	0 a 82 m/min 0 a 41 m/min	15 kW
	0 a 1 r.p.m.	2x5 daN.m
	0 a 60 m/min	3 kW
	15 m/min	2x3 kW
		30 kVA
		400 V +- 5% (50 Hz)

* Opção . Option . Optional . Option . Opcción . Opzione . Seçenek . Опция



Elementos . Parts . Teile . Éléments . Elementos . Elemento . Parçalar . ЭЛЕМЕНТЫ

		A (mm)	B (mm)	C (mm)	kg	Code
L55		11950	1210	2600	3100	
L56		5200	1160	1930	590	
L52		5200	1160	1650	535	
L53		5200	1160	1650	510	
L42		11820	1160	1210	820	
L43a		2100	1160	1210	120	509 52 13
L44		5100	1160	1210	230	
L45		8600	1160	1210	290	
RS6 RI5		2250	1350	2050	2640	
P1		1660	1220	1720	720	
CL12		12000	1380	560	2560	
CP1		1160	165	3140	2x1000 2000	704 10 00
CP2		1160	330	3140	5x2000 10000	704 20 00
TOTAL					24125	
A5		11985	1160	1160	3080	530 12 00
A5		6075	1160	1160	1660	530 06 00
A5		3120	1160	1160	990	530 06 01
A5		3120	1385	1385	1040	530 06 03
A5		1275	1160	1160	450	530 06 02
A5		5530	500	750	1250	
A5		2270	360	750	2x635 1270	630 00 03
TOTAL					2520	

SGT
5213TL