

55m - 1.600kg

50m - 1.900kg

45m - 2.200kg

38m - 2.500kg

33m - 2.800kg

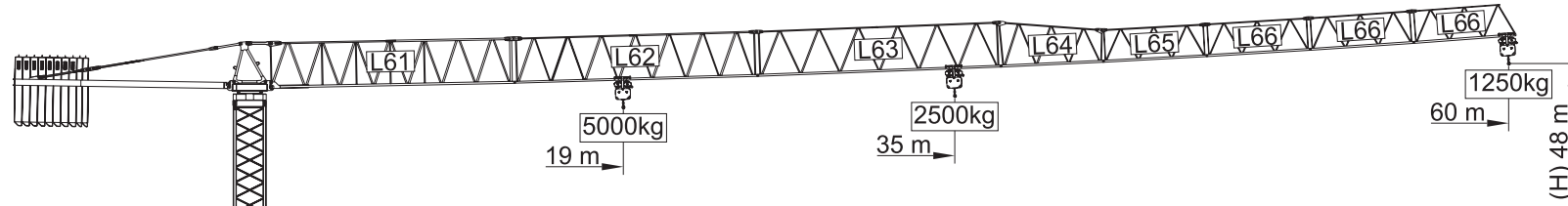
I

II

III

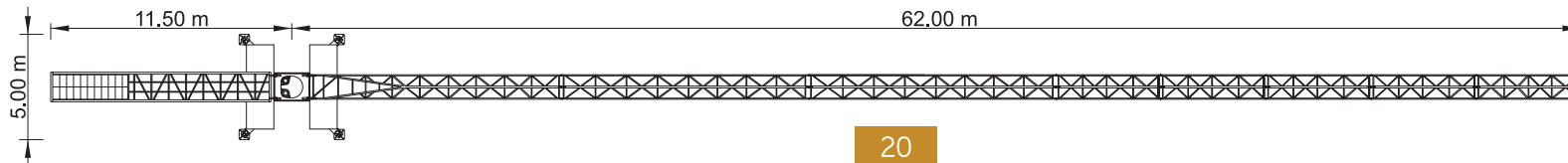
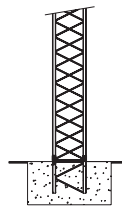
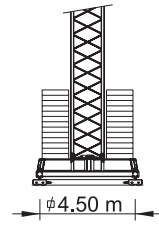
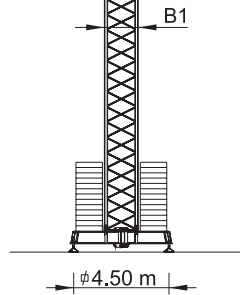
IV

V



Cargas.Loads.Lasten.Charges.Cargas.Carichi.Yükler. ГРУЗОПОДЪЕМНОСТЬ

Icon	Jib Diagram	Kg/m	m	m										
				18	23	28	33	38	45	50	55	60		
18000 kg 8x2000 + 2x1000 kg	60m L61+L62+L63+L64 +L65+L66+L66+L66	5000	35 m	2500	2500	2500	2500	2250	1800	1600	1400	1250		
		19 m	5000	4080	3260	2700	2250	1800	1600	1400	1250			
18000 kg 8x2000 + 2x1000 kg	55m L61+L62+L63+L64 +L65+L66+L66	5000	38,5 m	2500	2500	2500	2500	2500	2080	1820	1600			
		21 m	5000	4540	3640	3010	2550	2080	1820	1600				
17000 kg 8x2000 + 1x1000 kg	50m L61+L62+L63+L64 L65+L66	5000	40 m	2500	2500	2500	2500	2500	2180	1900				
		21,8 m	5000	4740	3800	3150	2670	2180	1900					
15000 kg 7x2000 + 1x1000 kg	45m L61+L62+L63+L64+L66	5000	40,5 m	2500	2500	2500	2500	2500	2200					
		22,1 m	5000	4800	3860	3200	2710	2200						
11000 kg 5x2000 + 1x1000 kg	38m L61+L62+L64+L65+L66	5000	38 m	2500	2500	2500	2500	2500						
		20,7 m	5000	4520	3620	3000	2500							
10000 kg 5x2000 kg	33m L61+L62+L64+L66	5000	33 m	2500	2500	2500	2500							
		19,8 m	5000	4300	3450	2800								



SGT 6012TL

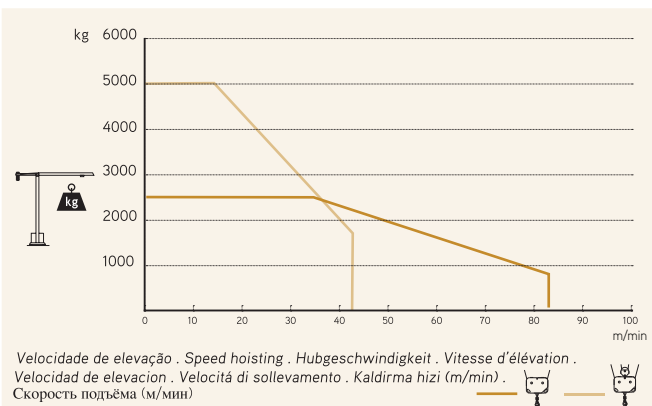
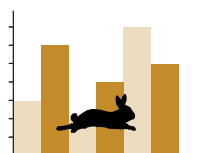
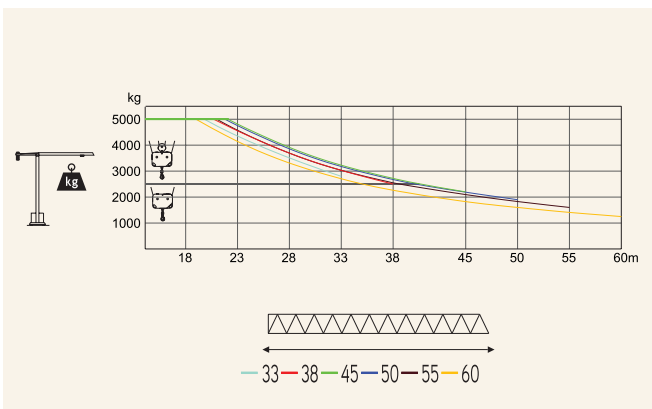
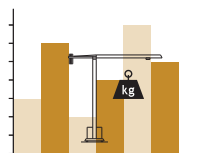
60m - 1.250kg

5.000Kg

Características . Eigenschaften
Caractéristiques . Caratteristiche . Caratteristiche
Özellikler . ХАРАКТЕРИСТИКИ

	0 a 82 m/min 0 a 41 m/min	15 kW
	0 a 1 r.p.m.	2x5 daN.m
	0 a 60 m/min	3 kW
	15 m/min	2x3 kW
		35 kVA
		400 V +- 5% (50/60 Hz)

* Opção . Option . Optional . Option . Opcción . Opzione . Seçenek . Опция



Velocidade de elevação . Speed hoisting . Hubgeschwindigkeit . Vitesse d'élévation .
Velocidad de elevación . Velocità di sollevamento . Kaldırma hızı (m/min) .
Скорость подъёма (м/мин)

Elementos . Parts . Teile . Éléments . Elementos . Parçalar . ЭЛЕМЕНТЫ

		A (mm)	B (mm)	C (mm)	kg	Code
L61		11850	1310	2900	3730	
L62		11850	1160	2250	1280	
L63		11850	1160	2250	1020	
L64		5110	1160	2250	400	
L65		5110	1160	1610	330	
L66		5110	1160	1610	3x300 900	531 60 12
RS7 RI7		2250	1600	2050	3120	
P2		1650	1220	2030	750	
CL5		10550	1500	500	3720	
CP3		1160	165	3140	2x1000 2000	704 10 00
CP2		1160	330	3140	8x2000 16000	704 20 00
TOTAL					33250	
B1		12000	1620	1620	3450	508 12 00
B1		6130	1620	1620	1800	508 06 00
B1		3195	1620	1620	1070	508 06 01
B1		3195	1830	1830	1100	508 06 03
B1		1775	1600	1600	650	508 06 02
B1		6620	500	1040	1850	608 00 01
B1		3210	340	1040	2x950 1900	
TOTAL					3750	